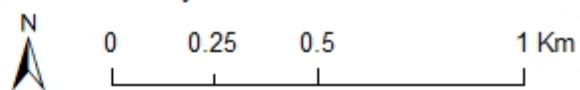


- Sparrowhawk
- ⊗ Vantage Point
- +— Transect
- +— Merlin Transect
- Firlough Site Boundary

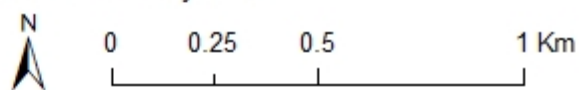
**Project:** Firlough Wind Farm - Bird Surveys  
**Title:** Sparrowhawk observations  
**Drawn By:** Wetland Surveys Ireland Ltd. for Biosphere Environmental Services  
**Date:** 12th May 2023

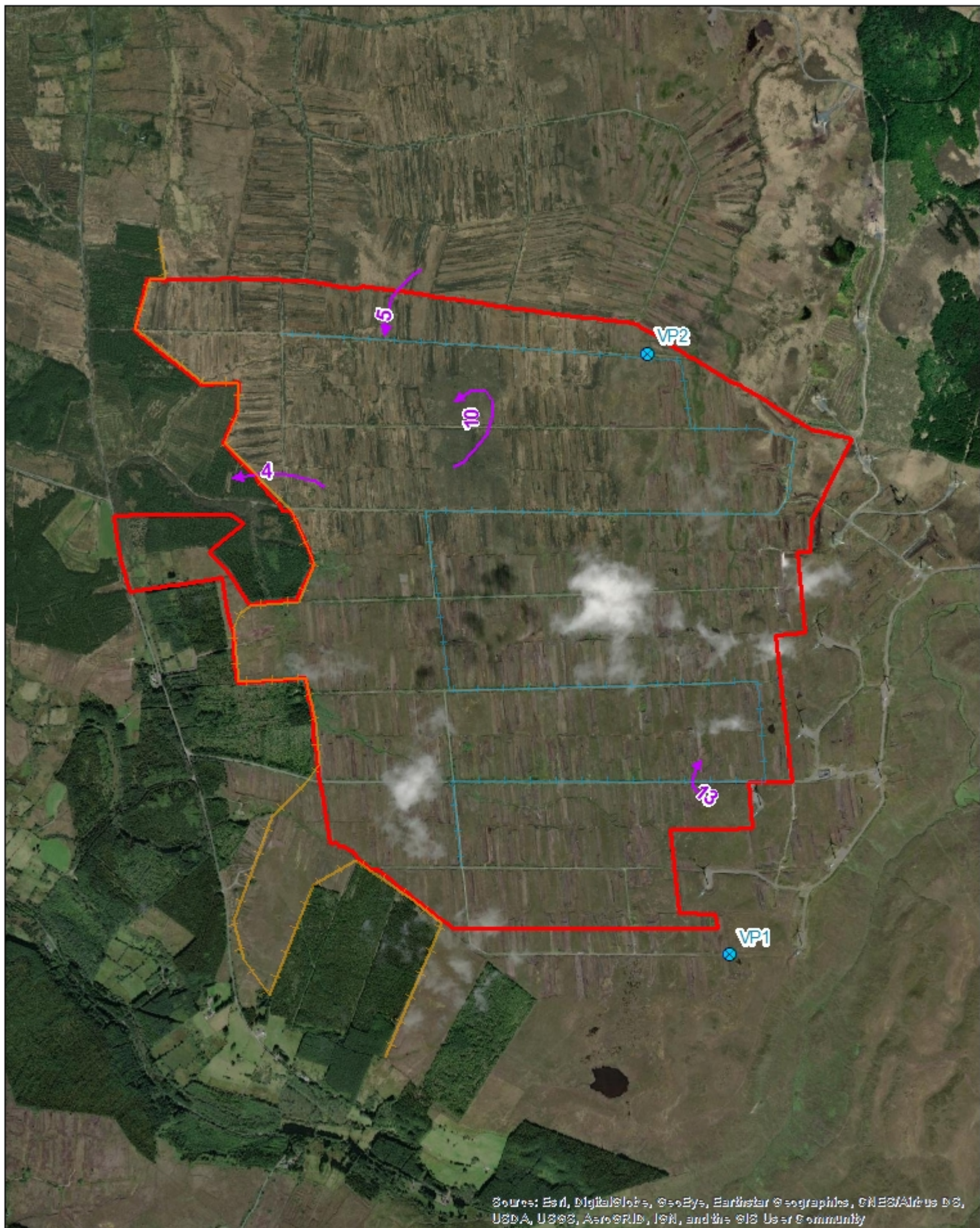




- Merlin
- ⊗ Vantage Point
- Transect
- Merlin Transect
- Firlough Site Boundary

**Project:** Firlough Wind Farm - Bird Surveys  
**Title:** Merlin observations  
**Drawn By:** Wetland Surveys Ireland Ltd. for Biosphere Environmental Services  
**Date:** 12th May 2023

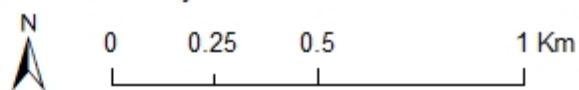


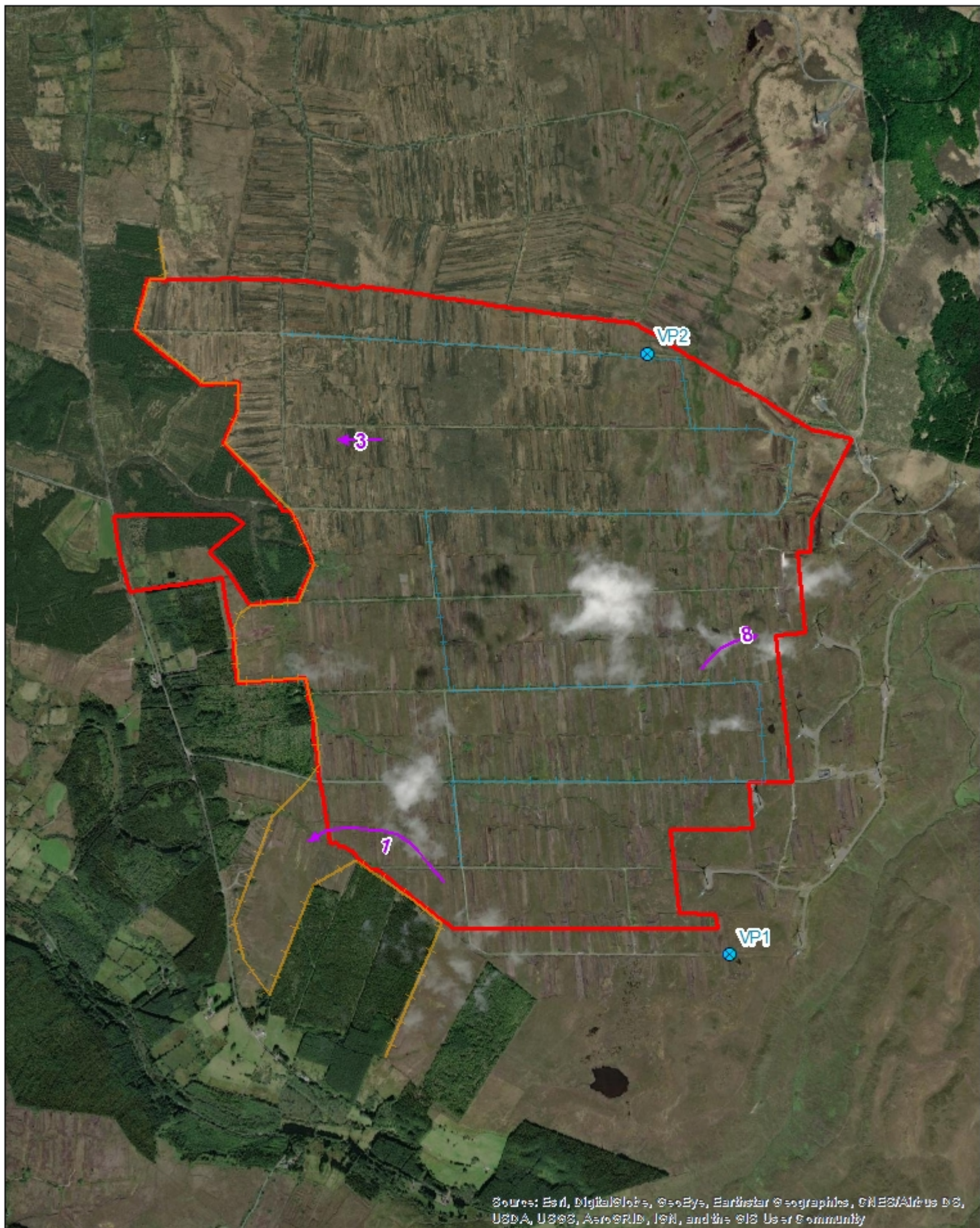


Source: Esri, DigitalGlobe, GeoEye, Earthstar Geographics, CNES/Airbus DS, USDA, USGS, AeroGRID, IGN, and the GIS User Community

- ➔ Kestrel
- ⊗ Vantage Point
- +— Transect
- +— Merlin Transect
- Firlough Site Boundary

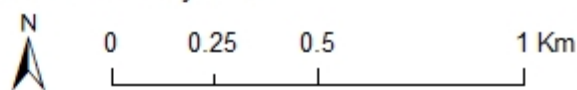
**Project:** Firlough Wind Farm - Bird Surveys  
**Title:** Kestrel observations (Summer)  
**Drawn By:** Wetland Surveys Ireland Ltd. for Biosphere Environmental Services  
**Date:** 12th May 2023

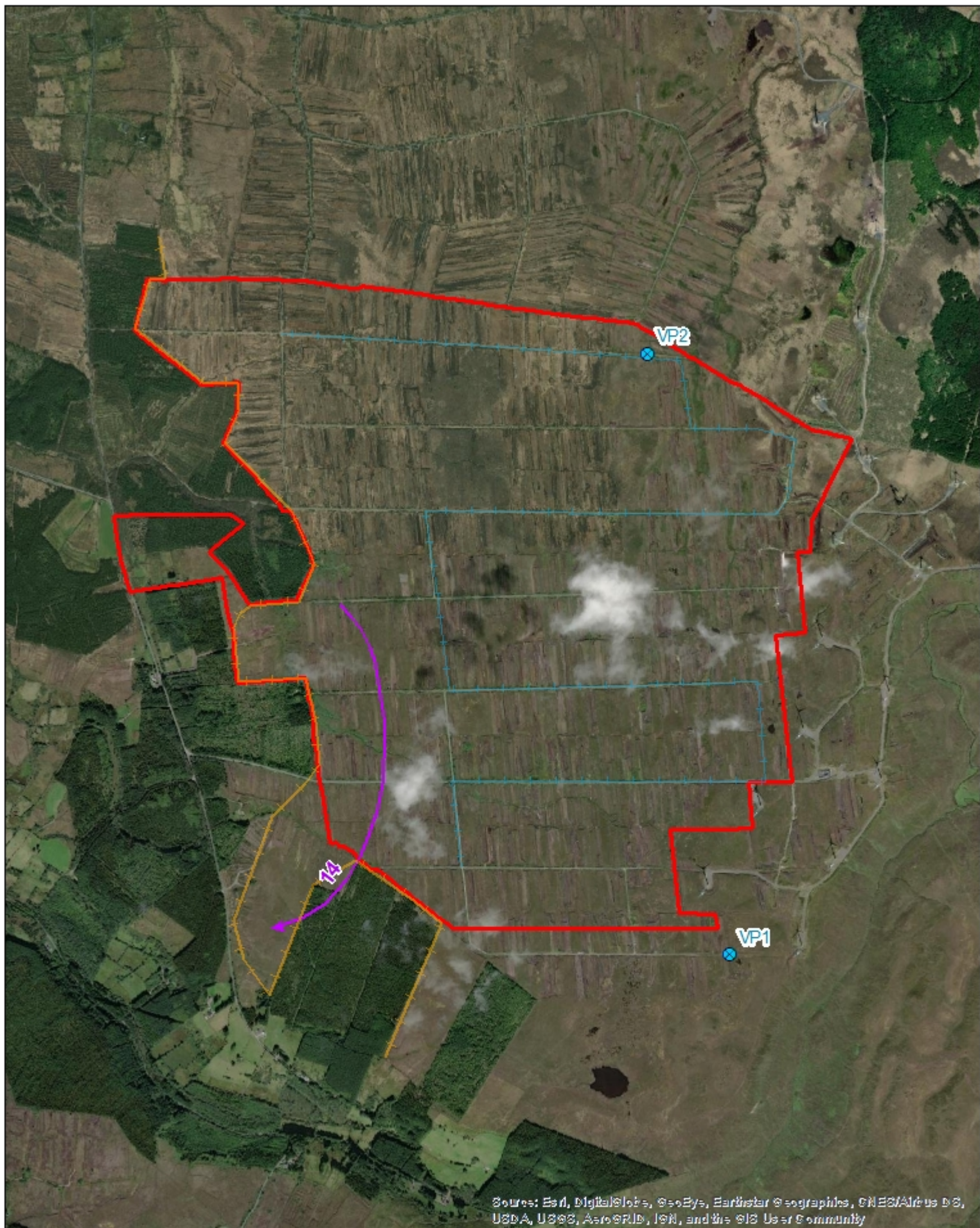




- ➔ Kestrel
- ⊗ Vantage Point
- +— Transect
- +— Merlin Transect
- Firlough Site Boundary

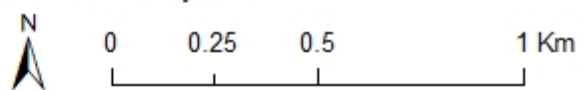
**Project:** Firlough Wind Farm - Bird Surveys  
**Title:** Kestrel observations (Winter)  
**Drawn By:** Wetland Surveys Ireland Ltd. for Biosphere Environmental Services  
**Date:** 12th May 2023

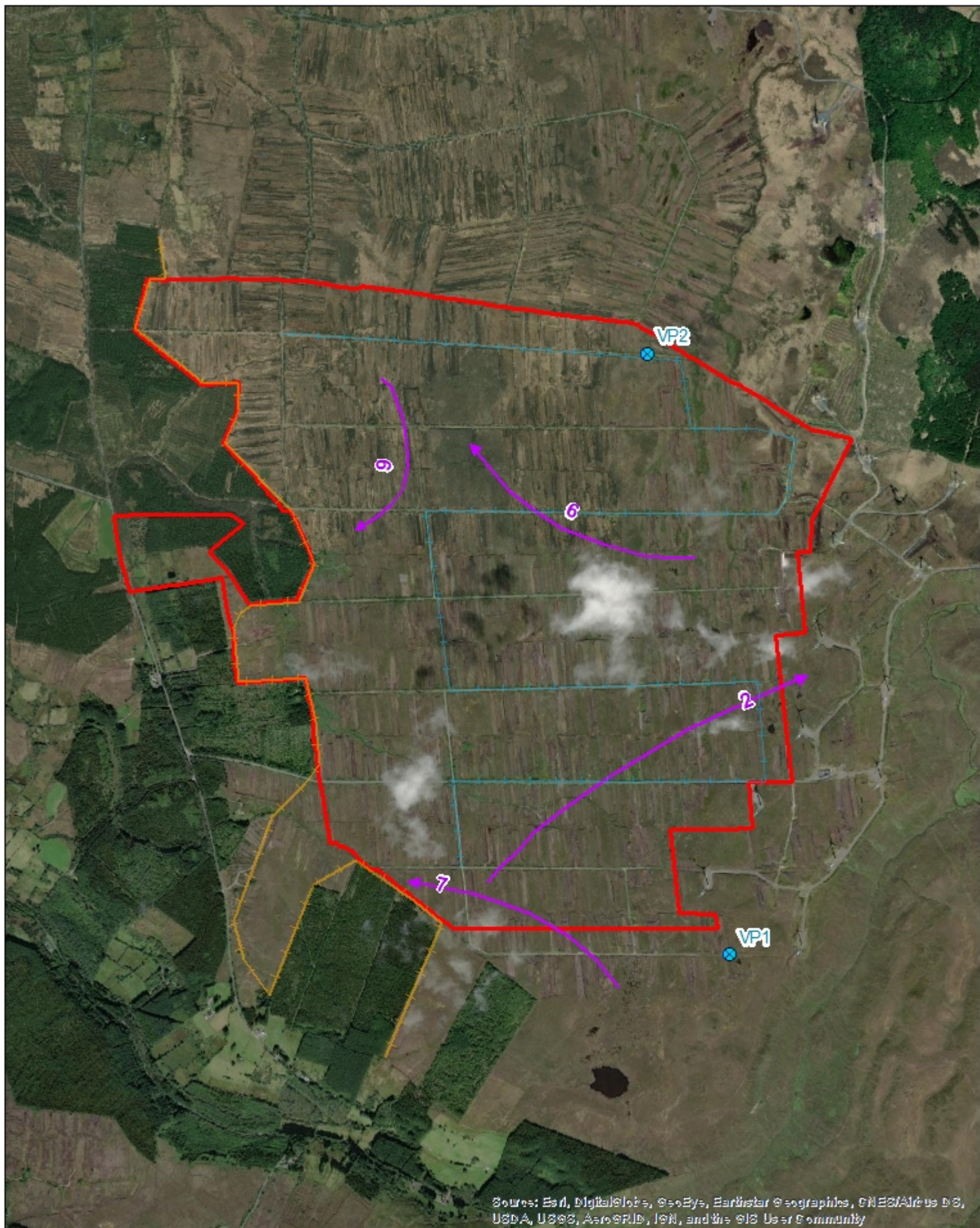




- Peregrine
- ⊗ Vantage Point
- Transect
- Merlin Transect
- Firlough Site Boundary

**Project:** Firlough Wind Farm - Bird Surveys  
**Title:** Peregrine observations  
**Drawn By:** Wetland Surveys Ireland Ltd. for Biosphere Environmental Services  
**Date:** 12th May 2023





- ➔ Golden Plover
- ⊗ Vantage Point
- +— Transect
- +— Merlin Transect
- Firlough Site Boundary

**Project:** Firlough Wind Farm - Bird Surveys  
**Title:** Golden Plover observations  
**Drawn By:** Wetland Surveys Ireland Ltd. for Biosphere Environmental Services  
**Date:** 12th May 2023

